

La Deploration de Jehon Okenheim

Josquin des Pres

8A-90

Musical score for Soprano (S), Alto (A), Tenor 1 (T1), Tenor 2 (T2), and Bass (B) staves. The score is in C major and common time. The Soprano part begins with a treble clef and a key signature of one flat. The Alto part begins with a treble clef and a key signature of one flat. The Tenor 1 part begins with a treble clef and a key signature of one flat. The Tenor 2 part begins with a treble clef and a key signature of one flat. The Bass part begins with a bass clef and a key signature of one flat. The score consists of five measures. The Soprano part has a melodic line with a fermata on the fifth measure. The Alto part has a melodic line with a fermata on the fifth measure. The Tenor 1 part has a melodic line with a fermata on the fifth measure. The Tenor 2 part has a melodic line with a fermata on the fifth measure. The Bass part has a melodic line with a fermata on the fifth measure.

Continuation of the musical score for Soprano (S), Alto (A), Tenor 1 (T1), Tenor 2 (T2), and Bass (B) staves. The score is in C major and common time. The Soprano part begins with a treble clef and a key signature of one flat. The Alto part begins with a treble clef and a key signature of one flat. The Tenor 1 part begins with a treble clef and a key signature of one flat. The Tenor 2 part begins with a treble clef and a key signature of one flat. The Bass part begins with a bass clef and a key signature of one flat. The score consists of five measures. The Soprano part has a melodic line with a fermata on the fifth measure. The Alto part has a melodic line with a fermata on the fifth measure. The Tenor 1 part has a melodic line with a fermata on the fifth measure. The Tenor 2 part has a melodic line with a fermata on the fifth measure. The Bass part has a melodic line with a fermata on the fifth measure.

15 20 2

This system contains five staves of music, measures 15 through 20. The notation includes various rhythmic values such as eighth and sixteenth notes, and rests. The key signature is one flat (B-flat). Measure numbers 15 and 20 are indicated at the beginning and end of the system. A page number '2' is located in the top right corner.

25

This system contains five staves of music, measures 25 through 30. The notation continues with similar rhythmic patterns. Measure numbers 25 and 30 are indicated at the beginning and end of the system.

30 35

This system contains five staves of music, measures 30 through 35. The notation includes various rhythmic values and rests. Measure numbers 30 and 35 are indicated at the beginning and end of the system.

Musical score for the first system, measures 35-40. The score is written for five staves in a key signature of one flat (B-flat major or D minor). The first staff is the treble clef, and the fourth staff is the bass clef. The second and third staves are also in treble clef. The music features various rhythmic values including quarter notes, eighth notes, and half notes, with some notes beamed together. There are several slurs and accents throughout. Measure numbers 35, 36, 37, 38, 39, and 40 are indicated above the staves. The number '40' appears multiple times, likely indicating the measure number for that staff.

Musical score for the second system, measures 41-45. The score continues from the first system, maintaining the same five-staff layout and key signature. The notation includes quarter notes, eighth notes, and half notes, with various slurs and accents. Measure numbers 41, 42, 43, 44, and 45 are indicated above the staves. The number '45' appears multiple times, likely indicating the measure number for that staff.



Musical score system 1, measures 50-55. The system consists of five staves. The first staff is the vocal line, starting with a fermata at measure 50. The second staff is the piano accompaniment, featuring a melodic line with eighth and sixteenth notes. The third staff is the guitar accompaniment, with a simple harmonic accompaniment. The fourth and fifth staves are the bass line, with a melodic line. The system ends with a double bar line and repeat signs.



Musical score system 2, measures 60-65. The system consists of five staves. The first staff is the vocal line, starting with a fermata at measure 60. The second staff is the piano accompaniment, featuring a melodic line with eighth and sixteenth notes. The third staff is the guitar accompaniment, with a simple harmonic accompaniment. The fourth and fifth staves are the bass line, with a melodic line. The system ends with a double bar line and repeat signs.

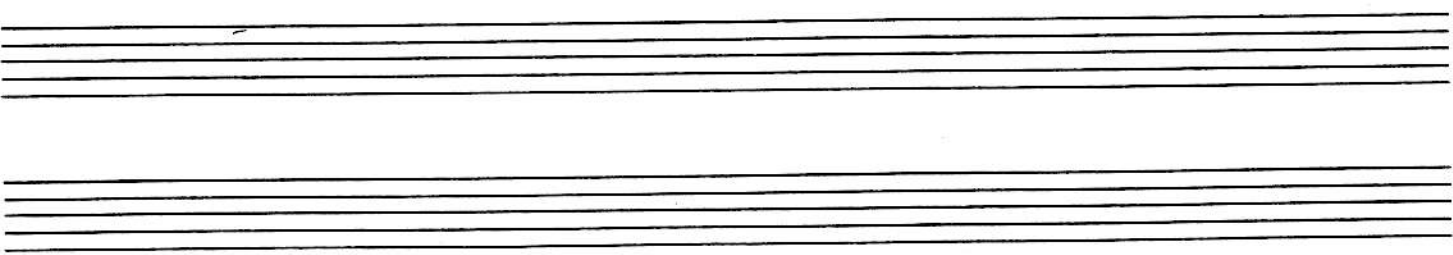
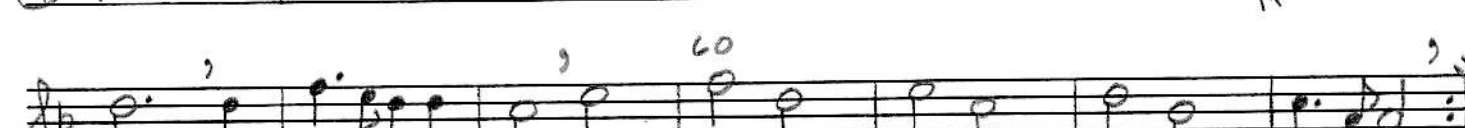
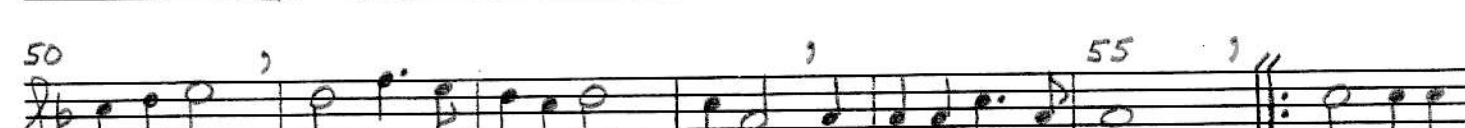
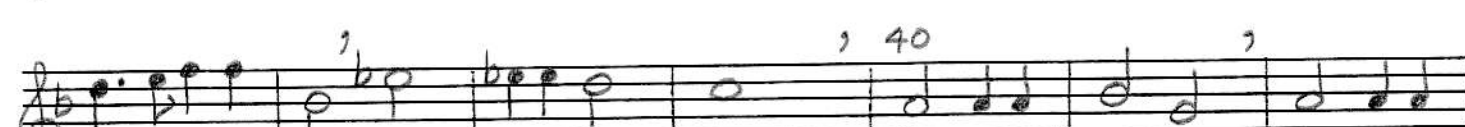
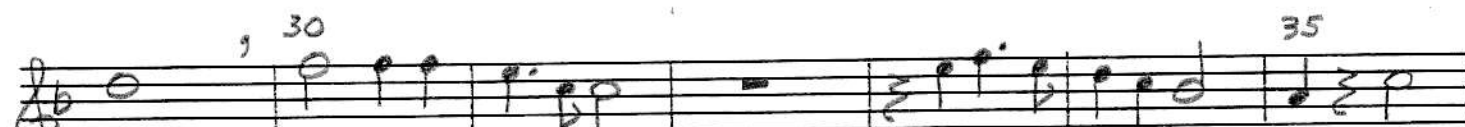
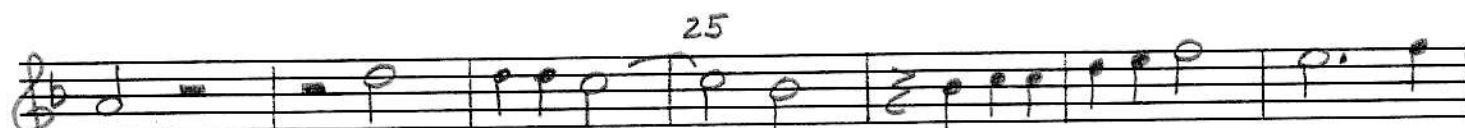
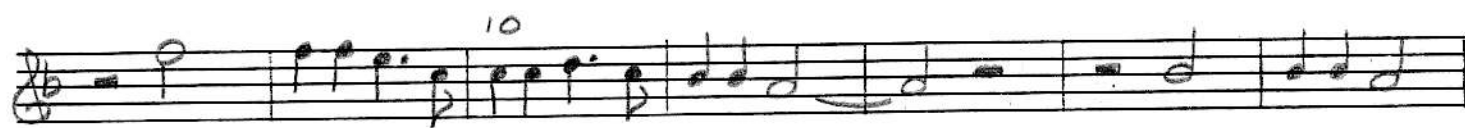


Musical score system 3, measures 65-70. The system consists of five staves. The first staff is the vocal line, starting with a fermata at measure 65. The second staff is the piano accompaniment, featuring a melodic line with eighth and sixteenth notes. The third staff is the guitar accompaniment, with a simple harmonic accompaniment. The fourth and fifth staves are the bass line, with a melodic line. The system ends with a double bar line and repeat signs.

SOPRANO

La Deploration de Jehon Okenheim

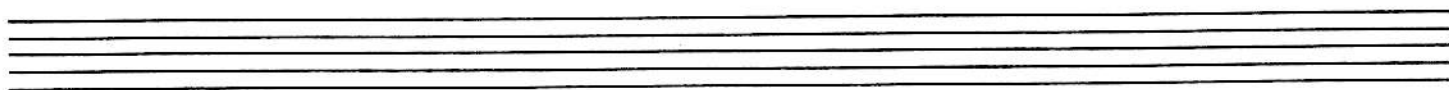
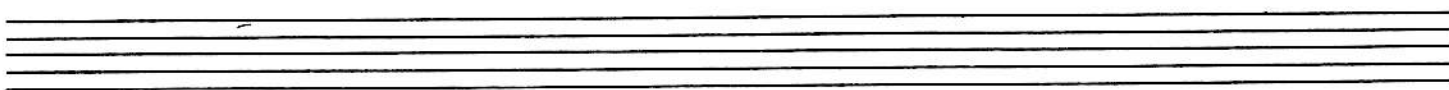
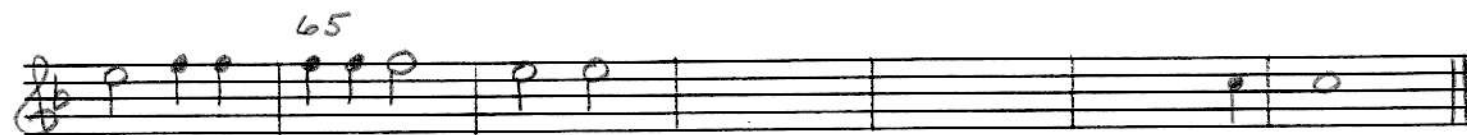
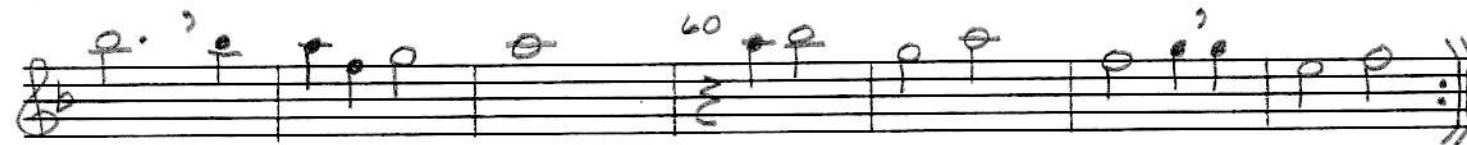
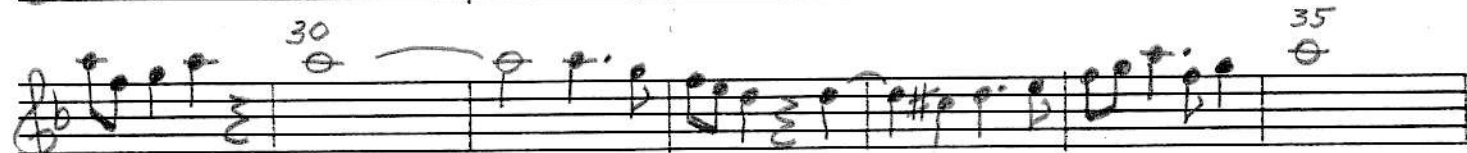
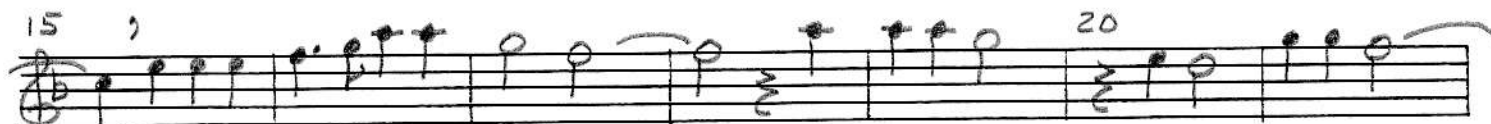
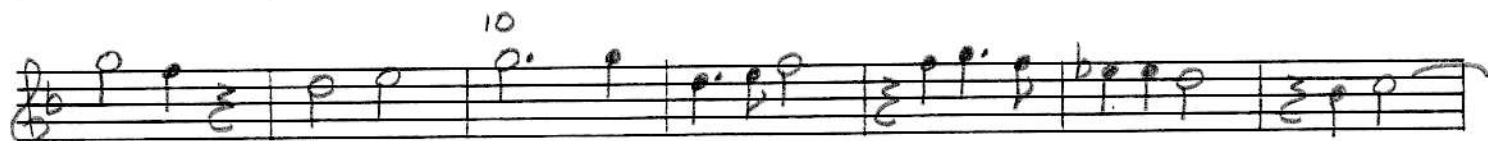
Josquin des Pres



La Deploration de Jehan Okenheim

Josquin des Pres

ALTO



TENOR 1 La Deploration de Jehan Okenheim Josquin des Pres

Handwritten musical notation for Tenor 1, measures 1-5. The staff is in G-clef and C-clef. Measure 5 has a '5' above it.

Handwritten musical notation for Tenor 1, measures 6-10. Measure 10 has a '10' above it.

Handwritten musical notation for Tenor 1, measures 11-20. Measure 15 has a '15' above it, and measure 20 has a '20' above it.

Handwritten musical notation for Tenor 1, measures 21-25. Measure 25 has a '25' above it.

Handwritten musical notation for Tenor 1, measures 26-35. Measure 30 has a '30' above it, and measure 35 has a '35' above it.

Handwritten musical notation for Tenor 1, measures 36-40. Measure 40 has a '40' above it.

Handwritten musical notation for Tenor 1, measures 41-45. Measure 45 has a '45' above it.

Handwritten musical notation for Tenor 1, measures 46-55. Measure 50 has a '50' above it, and measure 55 has a '55' above it.

Handwritten musical notation for Tenor 1, measures 56-60. Measure 60 has a '60' above it.

Handwritten musical notation for Tenor 1, measures 61-65. Measure 65 has a '65' above it.

Two empty musical staves.

Two empty musical staves.

La Deploration de Jehon Okenheim Josquin des Pres

TENOR 2

Handwritten musical score for Tenor 2, measures 1-65. The score is written on a single staff in G major (one sharp) and 4/4 time. It consists of ten lines of music. Measure numbers 5, 10, 15, 20, 25, 30, 35, 40, 45, 50, 55, and 60 are indicated above the staff. The notation includes various note values (quarter, eighth, and sixteenth notes), rests, and phrasing slurs. The piece concludes with a double bar line at measure 65.

BASS La Deploration de Jehon Okenheim Josquin des Pres

