

Good

raised to G

Arr. Roger Morris for Washington Recorder Society

~100

Ludwig Senfl

Sopran
[Alt]

Alto
Tenor

Tenor
[Alt]

Bass

Fortuna

T

A

15

A

T

20

25

30

System 1: Measures 25-30. This system contains four staves. The top staff has whole rests. The second staff (T) has a melodic line with eighth and sixteenth notes. The third staff (A) has a harmonic accompaniment with quarter and eighth notes. The bottom staff (B) has a bass line with eighth and sixteenth notes. The key signature has one flat.

35

System 2: Measures 35-40. This system contains four staves. The top staff has whole notes with a slur. The second staff (T) has a melodic line with eighth notes and a slur. The third staff (A) has a harmonic accompaniment with quarter notes. The bottom staff (B) has a bass line with eighth notes. Handwritten annotations 'T' and 'A' are present. The key signature has one flat.

40

System 3: Measures 40-45. This system contains four staves. The top staff has whole notes with a slur. The second staff (T) has a melodic line with eighth notes and a slur. The third staff (A) has a harmonic accompaniment with quarter notes. The bottom staff (B) has a bass line with eighth notes. Handwritten annotations 'T' and 'A' are present. The key signature has one flat.

45

50

System 4: Measures 45-50. This system contains four staves. The top staff has whole notes with a slur. The second staff (T) has a melodic line with eighth notes and a slur. The third staff (A) has a harmonic accompaniment with quarter notes. The bottom staff (B) has a bass line with eighth notes. Handwritten annotations 'T' and 'A' are present. The key signature has one flat.

55

Musical score system 1, measures 55-59. The system consists of four staves: Treble, Alto, Tenor, and Bass. The music is in a key with one flat (B-flat) and a common time signature. The notation includes various note values, rests, and slurs. There are handwritten annotations: a 'T' in the first measure, an 'A' in the second measure, and a 'T' in the third measure.

60

65

Musical score system 2, measures 60-64. The system consists of four staves: Treble, Alto, Tenor, and Bass. The notation continues with various note values and rests. Handwritten annotations include a 'T' in the second measure and an 'A' in the third measure.

70

75

Musical score system 3, measures 65-69. The system consists of four staves: Treble, Alto, Tenor, and Bass. The notation includes various note values and rests. Handwritten annotations include a 'T' in the second measure, an 'A' in the third measure, and a '+' in the fourth measure.

80

Musical score system 4, measures 70-74. The system consists of four staves: Treble, Alto, Tenor, and Bass. The notation includes various note values and rests. A handwritten annotation 'A' is present in the second measure.

85 90

This system contains measures 85 to 90. It features four staves: a top staff with a treble clef and a key signature of one flat, and three lower staves with bass clefs. The music includes various note values, rests, and dynamic markings. Handwritten annotations include 'T' and 'A' with arrows pointing to specific notes in the second and third staves.

95 100

This system contains measures 95 to 100. It features four staves with the same instrumentation as the first system. The music continues with similar rhythmic patterns and melodic lines. Handwritten annotations 'T' and 'A' are present, with 'A' appearing in the second and third staves.

105

This system contains measures 105 to 110. It features four staves. The top staff has a treble clef, while the others have bass clefs. The music shows a continuation of the piece with various note values and rests. Handwritten annotations 'T' and 'A' are visible in the second and third staves.

110 115

This system contains measures 110 to 115. It features four staves. The music concludes with various note values and rests. Handwritten annotations 'T' and 'A' are present in the second and third staves. A circled '3' is written below the first staff in the final measure.

Soprano

Fortuna

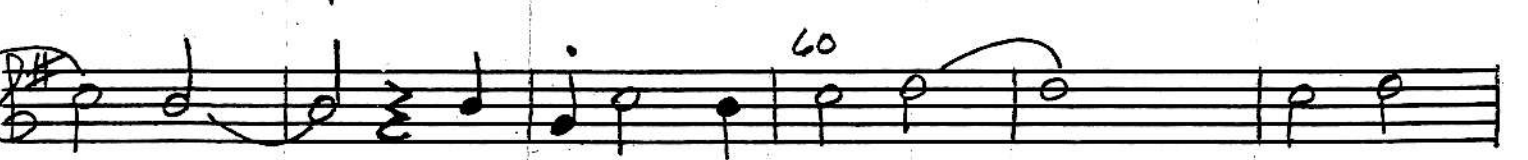
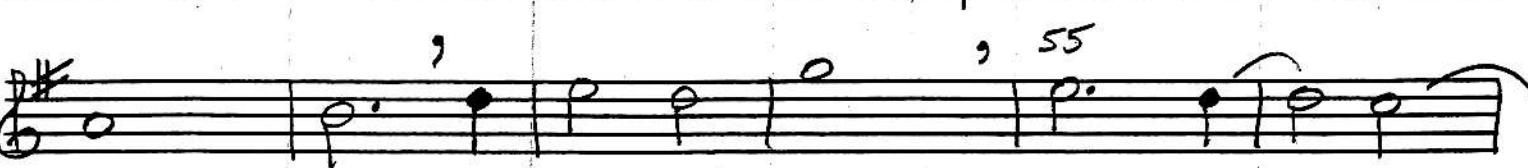
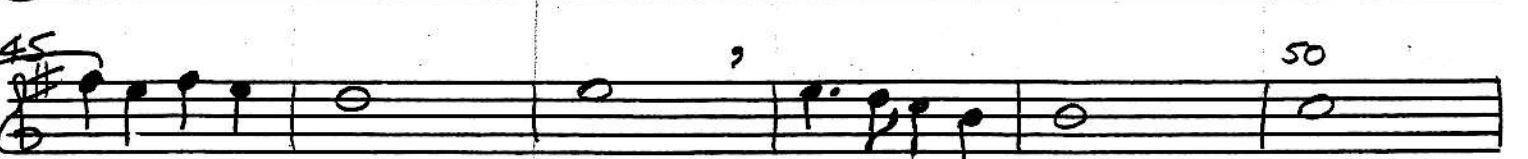
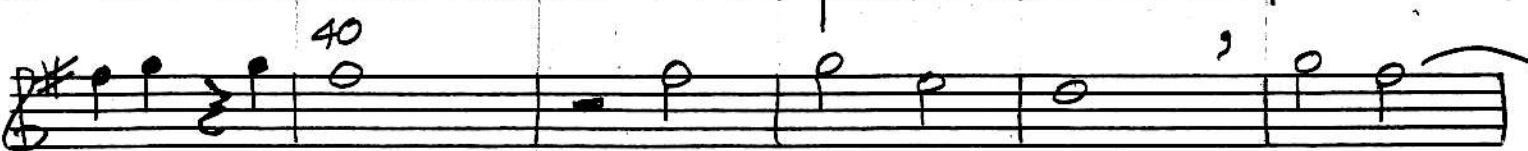
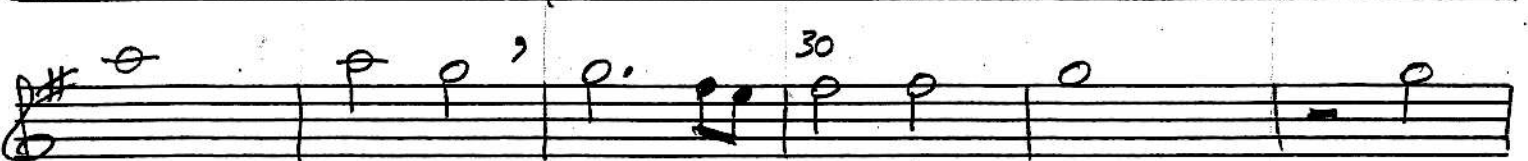
L. Senfi
1486-1543

Handwritten musical score for Soprano, titled "Fortuna" by L. Senfi (1486-1543). The score is written on 12 staves, each beginning with a treble clef and a key signature of one sharp (F#). The music is marked with measure numbers: 1, 5, 10, 16, 20, 30, 35, 40, 45, 50, 55, 60, 65, 70, 75, 80, 85, 90, 95, 100, 105, 110, and 115. The notation includes various note values (quarter, eighth, sixteenth notes), rests, and bar lines. There are some handwritten annotations, such as a "4" above a bar line at measure 16 and another "4" above a bar line at measure 98. The piece concludes with a double bar line at measure 115.

ALTO

Fortuna

L. Senfi
1486-1543



A

Fortuna, page 2

Serif

Handwritten musical score for 'Fortuna, page 2'. The score is written on ten staves in G major (one sharp) and 3/4 time. The music features a variety of note values including quarter, eighth, and sixteenth notes, as well as rests. Bar numbers 65, 70, 75, 80, 85, 90, 95, 100, 105, and 110 are clearly marked above the staves. The notation includes slurs, accents, and dynamic markings such as 'p' (piano) and 'f' (forte). The piece concludes with a fermata over the final note.

Tenor

Fortuna

L. Senfi
1486-1543

1 5 2

3 3 10

15 3 3

3 3 3 20 3

25 30

35

40

45

50

55 60

T

fortuna, page 2

L. Senfi

65

70

75,

80

85

90

95

100,

105

110

115

Bass

Fortuna

L. senfi
1486-1543

Handwritten musical score for Bass, titled "Fortuna" by L. Senfi (1486-1543). The score consists of ten staves of music in bass clef with a key signature of one sharp (F#). The music features various rhythmic patterns, including eighth and sixteenth notes, and rests. Measure numbers 5, 10, 15, 20, 25, 30, 35, 40, 45, 50, 55, 60, and 65 are marked above the staves. The notation includes slurs, accents, and dynamic markings such as "p" and "f".

B

Fortuna, page 2

L. Senfl.

Handwritten musical score for Bass clef, titled "Fortuna, page 2" by L. Senfl. The score consists of nine staves of music in G major (one sharp). Measure numbers 70, 75, 80, 85, 90, 95, 100, 105, 110, and 115 are marked above the staves. The music includes various rhythmic values, accidentals, and a triplet of eighth notes at measure 110.