

# Ave maris stella

SATB a cappella

Edvard Hagerup Grieg  
(1843-1907)Allegretto molto tranquillo  $\text{♩} = 108$ 

Soprano *p* A - ve, ma - ris stel - la, De - i ma - ter al - ma,

Alto *p* A - ve, ma - ris stel - la, De - i ma - ter al - ma,

Tenor *p* A - ve, ma - ris stel - la, De - i ma - ter al - ma,

Bass *p* A - - - - - ve, ma - - - - ris stel - la,

poco animato

*mf cresc.* At - que sem - per Vir - go, Fe - lix coe - li por - ta.

*mf cresc.* At - que sem - per Vir - go, Fe - lix coe - li por - ta.

*mf cresc.* At - que sem - per Vir - go, Fe - lix coe - li por - ta, coe - li

*mf cresc.* At - que sem - per Vir - go, Fe - lix coe - li por - ta, coe - li

tranquillo

*pp dolce*

*pp dolce* Sol - ve vin - cla re - is: Pro - fer lu - men cae - cis,

*pp dolce* Sol - ve vin - cla re - is: Pro - fer lu - men cae - cis,

*pp dolce* por - ta. Sol - ve vin - cla re - is: Pro - fer lu - men cae - cis,

*pp dolce* por - ta. Sol - ve vin - cla re - is: Pro - fer lu - men cae - cis,

15 *cresc. molto* *f* *dim.* *p* ?

Ma - la no - stra pel - le, Bo - - - na cunc - ta pos - - - ce, cunc - ta

*cresc. molto* *f* *dim.* *p* ?

Ma - la no - stra pel - le, Bo - na cunc - - ta pos - - - ce, cunc - ta

*cresc. molto* *f* *dim.* *p*

Ma - la no - stra pel - le, Bo - na cunc - - ta pos - - - ce.

*cresc. molto* *f* *dim.* *p*

Ma - la no - stra pel - le, Bo - na cunc - - ta pos - - - ce.

20 *poco rit.* *pp* *p*

pos - - - ce. Vi - tam prae - sta pu - ram, I - ter pa - ra

*poco rit.* *pp* *p*

pos - - - ce. Vi - tam prae - sta pu - ram, I - ter pa - ra

*p*

Vi - tam prae - sta pu - ram, I - ter pa - ra

*p*

Vi - - - - - tam prae - - - sta

25 *poco animato* *mf* *cresc.* *f*

tu - tum, Ut, vi - den - tes Je - sum, Sem - per col - lae - te - mur.

*mf* *cresc.* *f*

tu - tum, Ut, vi - den - tes Je - sum, Sem - per col - lae - te - mur.

*mf* *cresc.* *f*

tu - tum, Ut, vi - den - tes Je - sum, Sem - per col - lae - te - mur,

*mf* *cresc.* *f*

pu - ram, Ut, vi - den - tes Je - sum, Sem - per col - lae - te - mur,

*tranquillo*  
*pp dolce*

30

Sit laus De - o pa - tri, Sum - mo Chri - sto

*pp dolce*

Sit laus De - o pa - tri, Sum - mo Chri - sto

*pp* col - lae - te - mur. *pp dolce* Sit laus De - o pa - tri, Sum - mo Chri - sto

*pp* col - lae - te - mur. *pp dolce* Sit laus De - o pa - tri, Sum - mo Chri - sto

*cresc. molto* *f* *dim.*

35

de - cus, Spi - ri - tu - i San - cto: Tri - bus ho - nor u - - -

*cresc. molto* *f* *dim.*

de - cus, Spi - ri - tu - i San - cto: Tri - bus ho - nor u - - -

*cresc. molto* *f* *dim.*

de - cus, Spi - ri - tu - i San - cto: Tri - bus ho - nor u - - -

*cresc. molto* *f* *dim.*

de - cus, Spi - ri - tu - i San - cto: Tri - bus ho - nor u - - -

*poco rit.* *p* *pp* *più lento*

40

- nus, ho - nor u - - - nus. A - - - men.

*p* *poco rit.* *pp* *più lento*

- nus, ho - nor u - - - nus. A - - - men.

*p* *pp* *più lento*

- nus. A - - - men.

*p* *pp* *più lento*

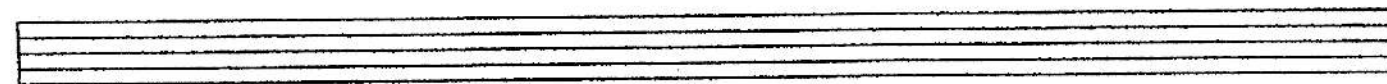
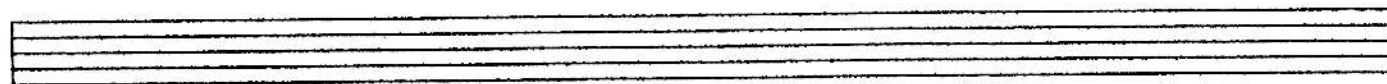
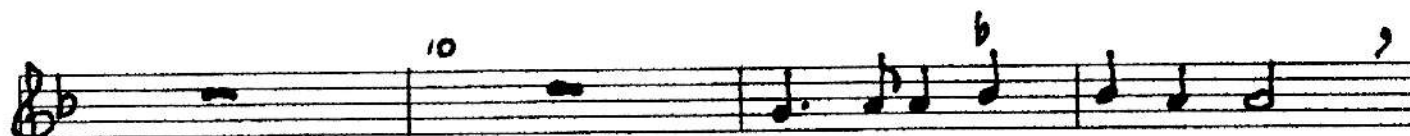
- nus. A - - - men.

51

# Ave maris stella

Edvard Grieg  
1843-1907

♩ = 100





## Ave maris stella

Edvard Grieg  
1843-1907

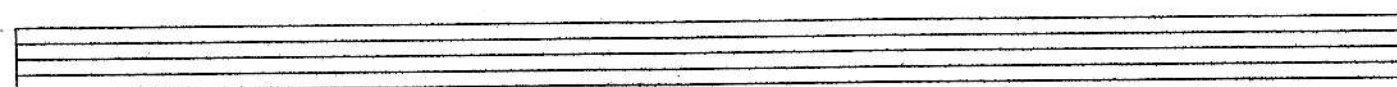
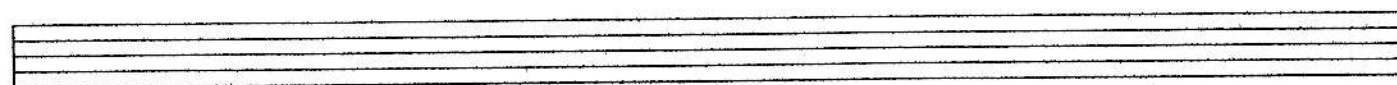
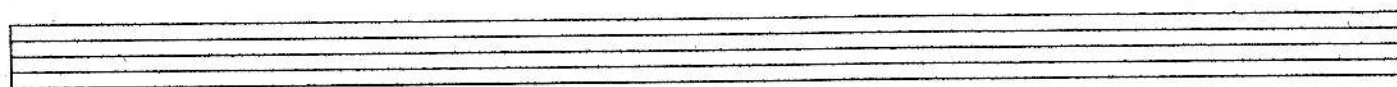
♩ ≈ 100

5

10

15

20

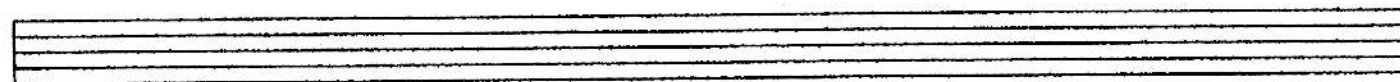
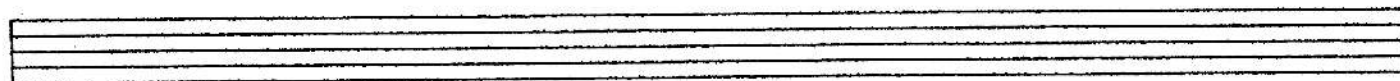


A1

# Ave maris stella

edvard Grieg

Handwritten musical notation for the first system of "Ave maris stella" by Edvard Grieg. The notation is written on a single staff in G major (one sharp) and 4/4 time. The tempo is marked "♩ = 100". The key signature is G major (one sharp). The notation includes various musical symbols such as notes, rests, and bar lines. The first line contains measures 1 through 4. The second line contains measures 5 through 8. The third line contains measures 9 through 12. The fourth line contains measures 13 through 16. The fifth line contains measures 17 through 20. The sixth line contains measures 21 through 24. The notation ends with a double bar line.

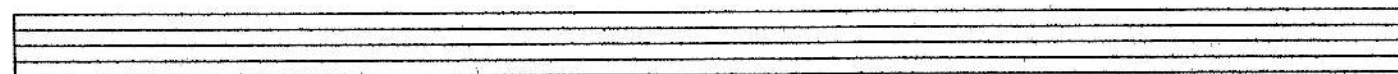
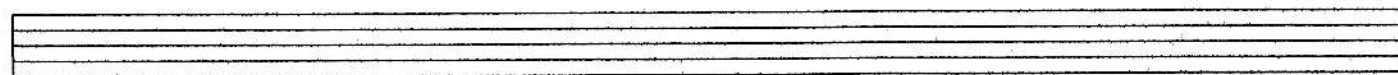
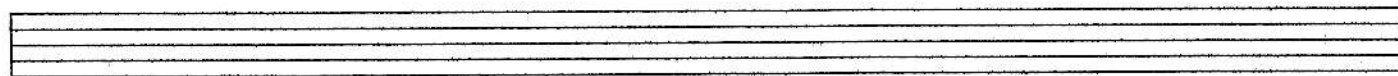
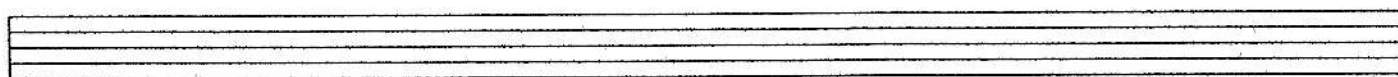


A2

## Ave maris stella

Edward Grieg

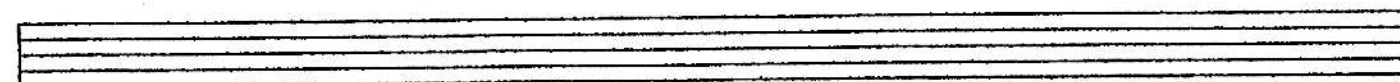
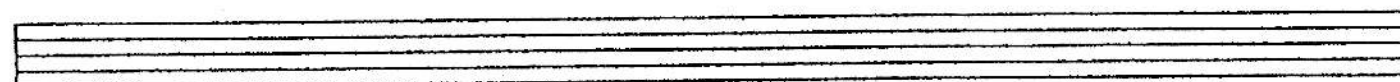
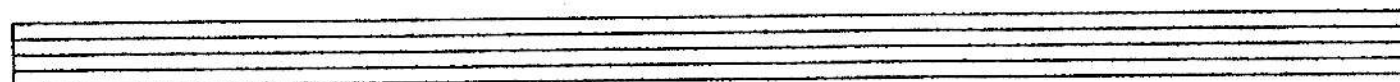
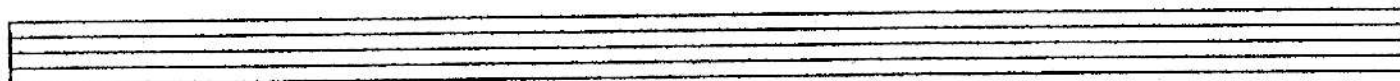
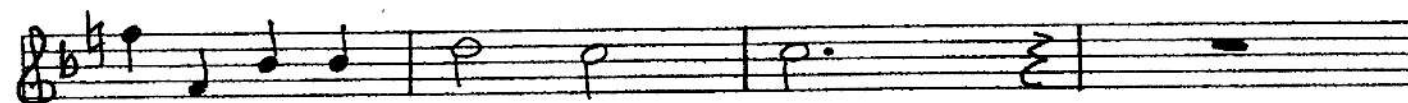
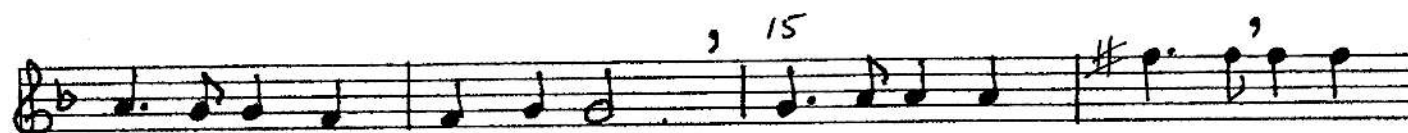
Handwritten musical score for "Ave maris stella" by Edward Grieg, A2. The score is written on a single staff in G major (one sharp) and 4/4 time. The tempo is marked "♩ ≈ 100". The score consists of 24 measures, with measure numbers 5, 10, 15, and 20 indicated above the staff. The notation includes various note values (quarter, eighth, and half notes), rests, and accidentals (sharps and naturals). The piece concludes with a double bar line.



T1

# Ave maris stella

Edvard Grieg  
1843-1907

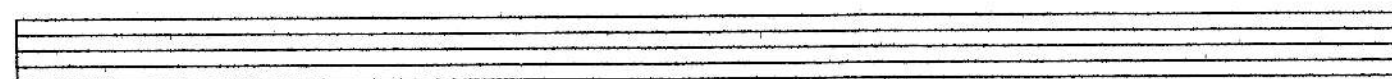
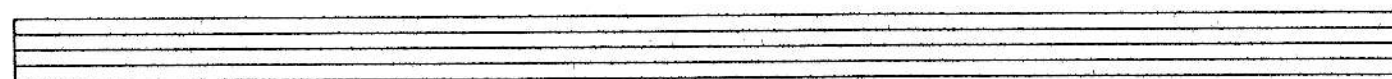
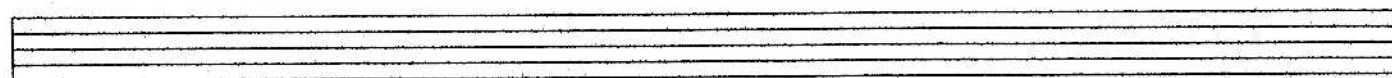
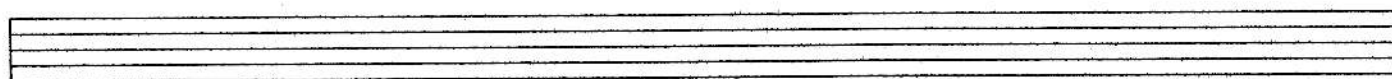
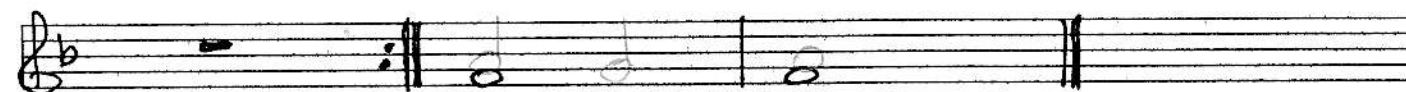
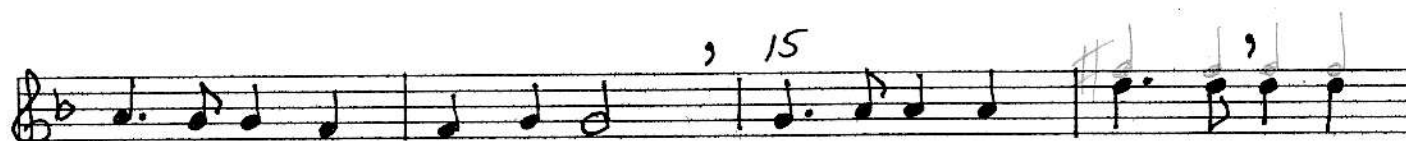




T2

# Ave maris stella

Edvard Grieg  
1843-1907



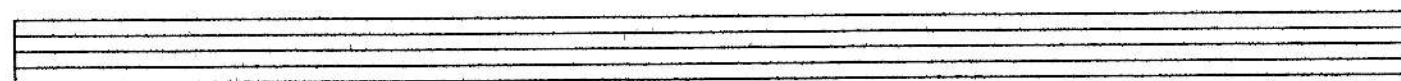
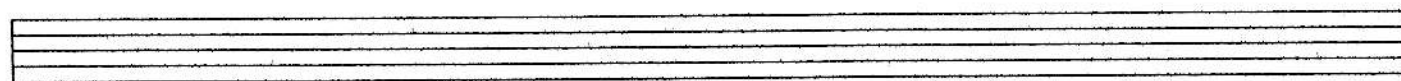
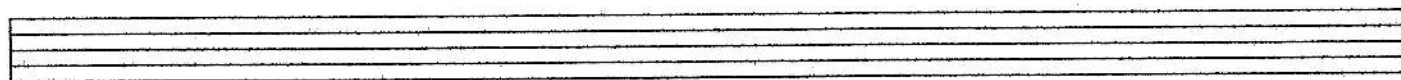
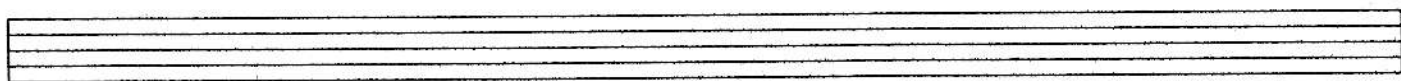
B1

## Ave maris stella

Edvard Grieg  
1843-1907

$\text{♩} \sim 100$

5 10 15 20



B2 or G-B

# Ave maris stella

Edvard Grieg  
1843-1907

♩ = 100

