

Soprano or
Alto 8va
♩ = 70

Motet: Justorum Animae

W. Byrd
1605

5

10

15

20

25

30

35

Alto

Motet: Justorum animae

Byrd
1605

Handwritten musical score for Alto voice, Motet: Justorum animae by William Byrd (1605). The score consists of eight staves of music in G major, 4/4 time. The notation includes various note values, rests, and ornaments. Measure numbers 5, 10, 15, 20, 25, 30, and 35 are indicated above the staves. The piece concludes with a double bar line on the eighth staff.

Four empty musical staves for other voices or instruments.

Tenor

Motet: Justorum animae

Byrd
1605

Handwritten musical score for Tenor voice, Motet: Justorum animae by William Byrd, 1605. The score consists of eight staves of music in G major, 4/4 time. The first staff begins with a treble clef and a common time signature. The music features various note values including minims, crotchets, and quavers, with several measures containing rests. Measure numbers 5, 10, 15, 20, 25, 30, and 35 are indicated above the staves. The piece concludes with a double bar line on the eighth staff.

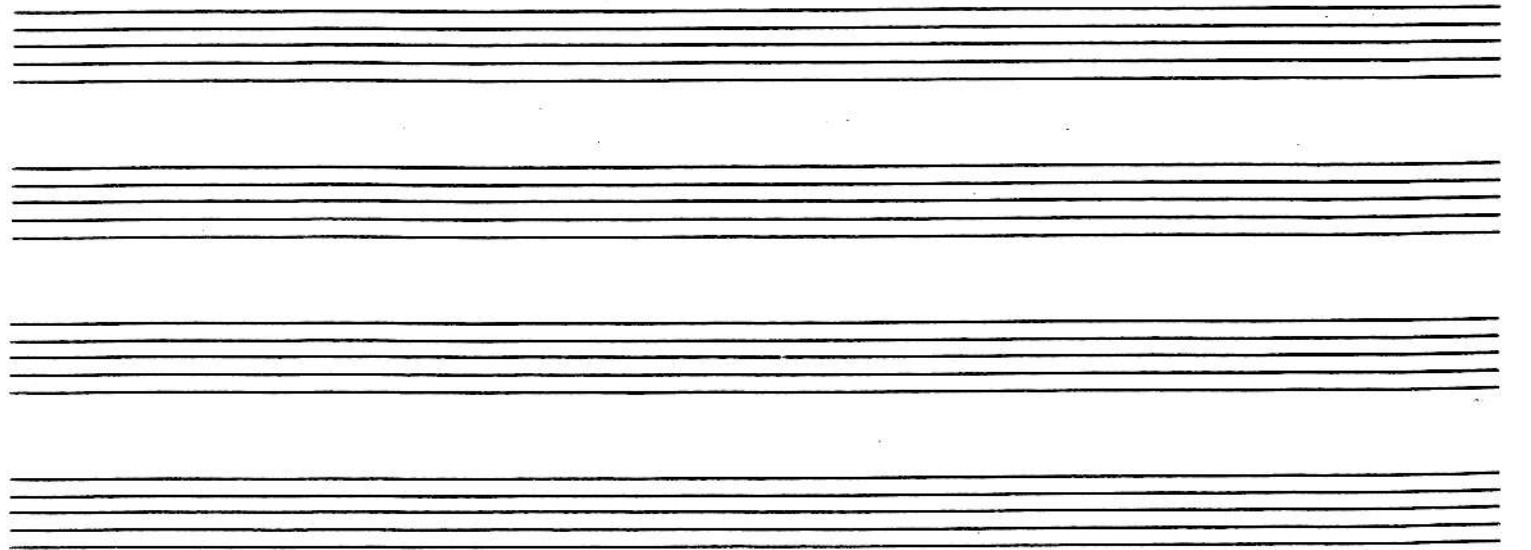
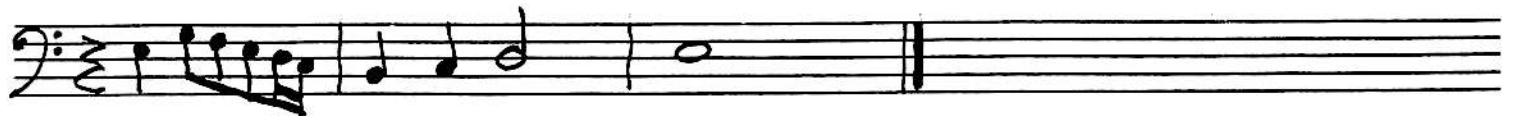
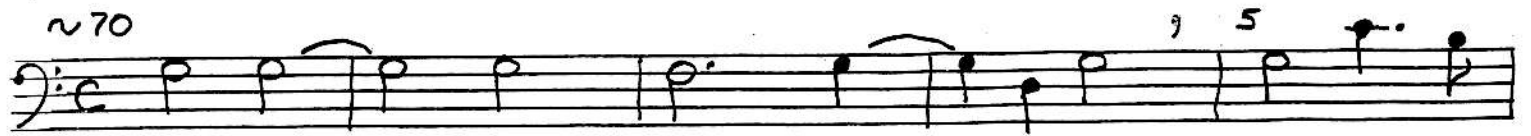
Four empty musical staves, likely for other voices or instruments.

MOTET: Jostorum Animae

w Byrd
1605

Bass I

~70



Bass 2 or
Great Bass

Motet: Justorum animae

Byrd
1605

5

Handwritten musical notation for the first staff, measures 1-5. The staff is in bass clef with a common time signature. It contains five measures of music. The fifth measure has a fermata over the final note.

10

Handwritten musical notation for the second staff, measures 6-10. The staff is in bass clef with a common time signature. It contains five measures of music. The tenth measure has a fermata over the final note.

15

Handwritten musical notation for the third staff, measures 11-15. The staff is in bass clef with a common time signature. It contains five measures of music. The fifteenth measure has a fermata over the final note.

20

Handwritten musical notation for the fourth staff, measures 16-20. The staff is in bass clef with a common time signature. It contains five measures of music. The twentieth measure has a fermata over the final note.

25

Handwritten musical notation for the fifth staff, measures 21-25. The staff is in bass clef with a common time signature. It contains five measures of music. The twenty-fifth measure has a fermata over the final note.

30

Handwritten musical notation for the sixth staff, measures 26-30. The staff is in bass clef with a common time signature. It contains five measures of music. The thirtieth measure has a fermata over the final note.

35

Handwritten musical notation for the seventh staff, measures 31-35. The staff is in bass clef with a common time signature. It contains five measures of music. The thirty-fifth measure has a fermata over the final note.

Handwritten musical notation for the eighth staff, measures 36-40. The staff is in bass clef with a common time signature. It contains five measures of music. The fortieth measure has a fermata over the final note.

Empty musical staff.

Empty musical staff.

Empty musical staff.

Empty musical staff.