

Disc 15  
File 1  
Part 21

J. S. Bach — II. Orgel-Büchlein

Good +

26 meas  
up to C

# Jesu, Meine Freude

## BWV 610

100  
Largo

Handwritten musical notation for measures 1-4. The score is in G major (one sharp) and 3/4 time. It features a treble and bass clef system. The right hand plays a melodic line with eighth and sixteenth notes, while the left hand provides a rhythmic accompaniment with eighth notes.

Handwritten musical notation for measures 5-10. The notation continues the piece, showing the continuation of the melodic and accompanimental lines. A measure rest of 5 is indicated at the beginning of the system.

Handwritten musical notation for measures 11-15. The piece continues with the same melodic and accompanimental patterns. A measure rest of 15 is indicated at the beginning of the system.

Handwritten musical notation for measures 16-20. The notation continues the piece. A measure rest of 20 is indicated at the beginning of the system.

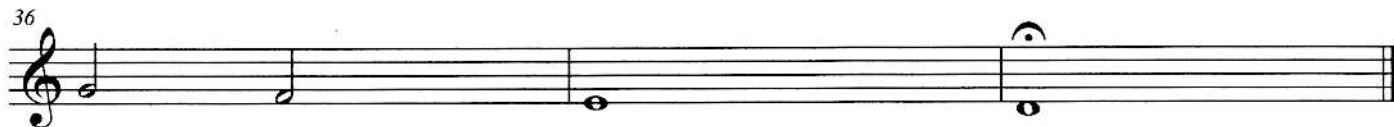
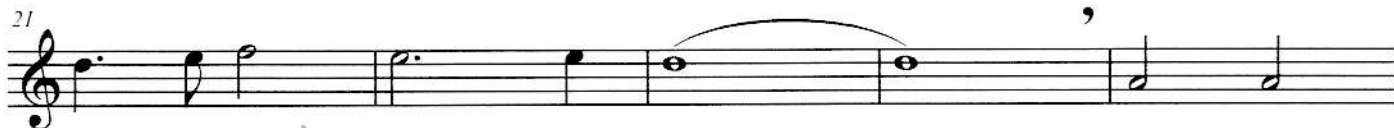
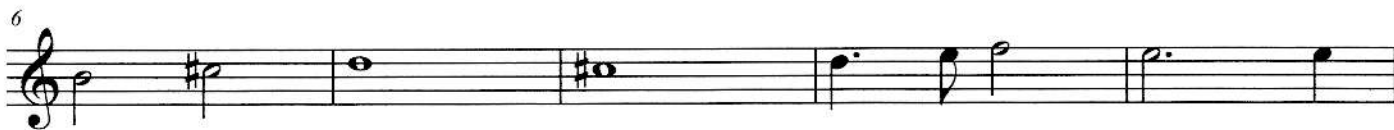
Handwritten musical notation for measures 21-25. The piece concludes with the final melodic and accompanimental lines. A measure rest of 25 is indicated at the beginning of the system.

# BWV 610

Soprano Recorder

Bach

♩ = 100



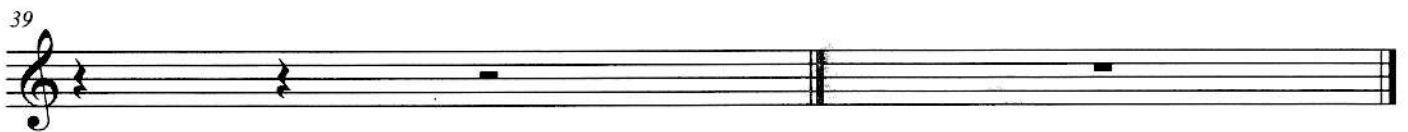


Tenor Recorder

# BWV 610

Bach

$\bullet = 100$



# BWV 610

Bach

♩ = 100

Bass

