

SOPRANO

CONTRAPUNCTUS 8

JS Bach

Handwritten musical score for Soprano, Contrapunctus 8 by JS Bach. The score is written on ten staves of five-line music paper. The key signature is one flat (Bb) and the time signature is common time (C). The piece is marked 'Allegro' at the beginning. Measure numbers 10, 15, 20, 25, 40, 45, 50, 55, 60, 65, 70, and 75 are indicated at the start of their respective staves. Performance markings include 'tr*' (trill) at measures 10 and 60, 'a tempo' at measure 40, and '(TYP.)' at measure 45. The score concludes with a final measure on the tenth staff.

*  TYP.

80 tr

85

90 SLOWER a tempo

95

100

105

110

115

120

125

130

135 tr

5

contra. 8, page 3

140



145



150



155



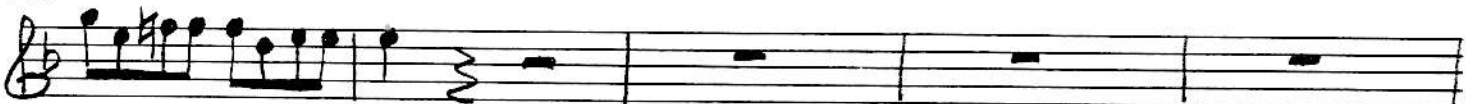
160



165



170



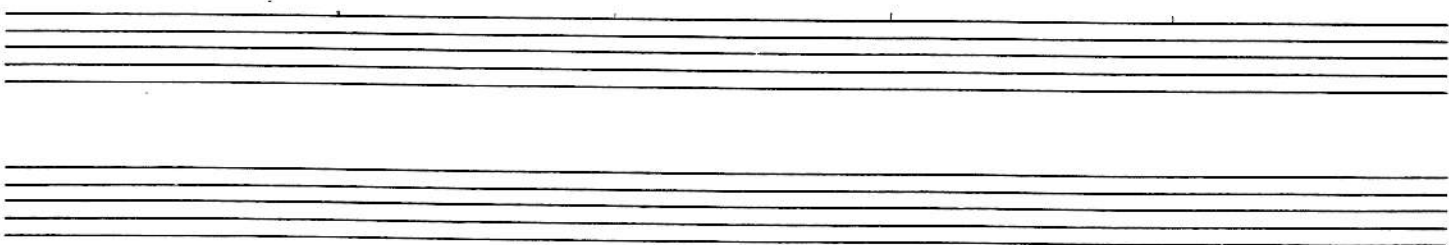
175



180



185



ALTO

CONTRAPUNCTUS 8

JS Bach

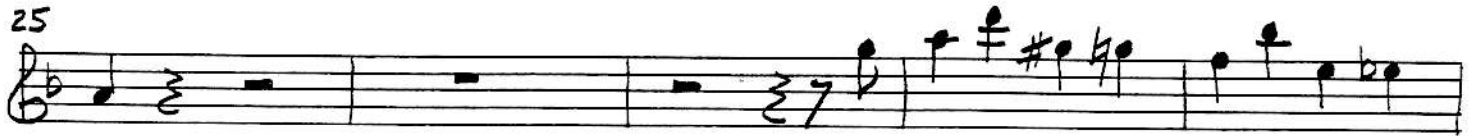
110
15



20



25



30



35



40



45



50



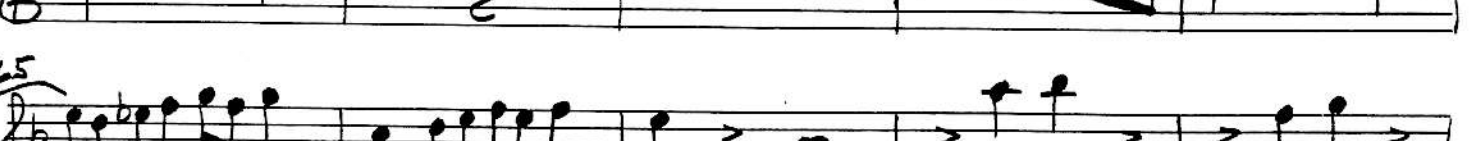
55



60



65



*  TYP.

A

Contra. B, page 2

70



75



80



85



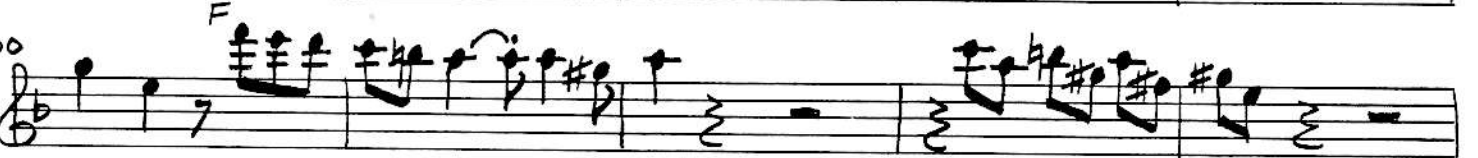
90



95



100



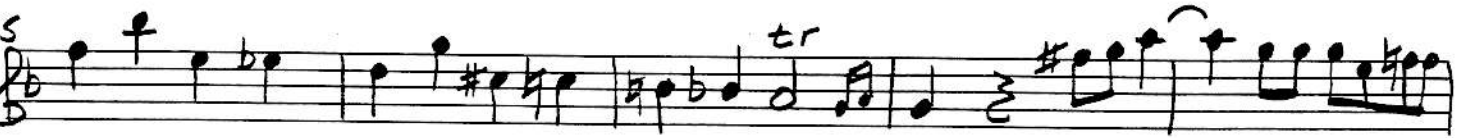
105



110



115



120



A Contra. 8, page 3

Handwritten musical score for Contrabass, page 3, measures 125-185. The score is written on ten staves in treble clef with a key signature of one flat (B-flat). Measure numbers 125, 135, 140, 145, 150, 155, 160, 165, 170, 175, 180, and 185 are indicated at the end of their respective staves. The music features various rhythmic patterns, including eighth and sixteenth notes, and rests. A fermata is present over a measure at approximately measure 152. A trill (tr) is marked above a note at approximately measure 182. The piece concludes with a double bar line at the end of the final staff.

TENOR

CONTRAPUNCTUS 8

JS Bach

$\text{♩} = 110$

5 (*)

(?) 10

15

20

25

30

35

slower a tempo 40

45

50

55

60

5

* TYP.

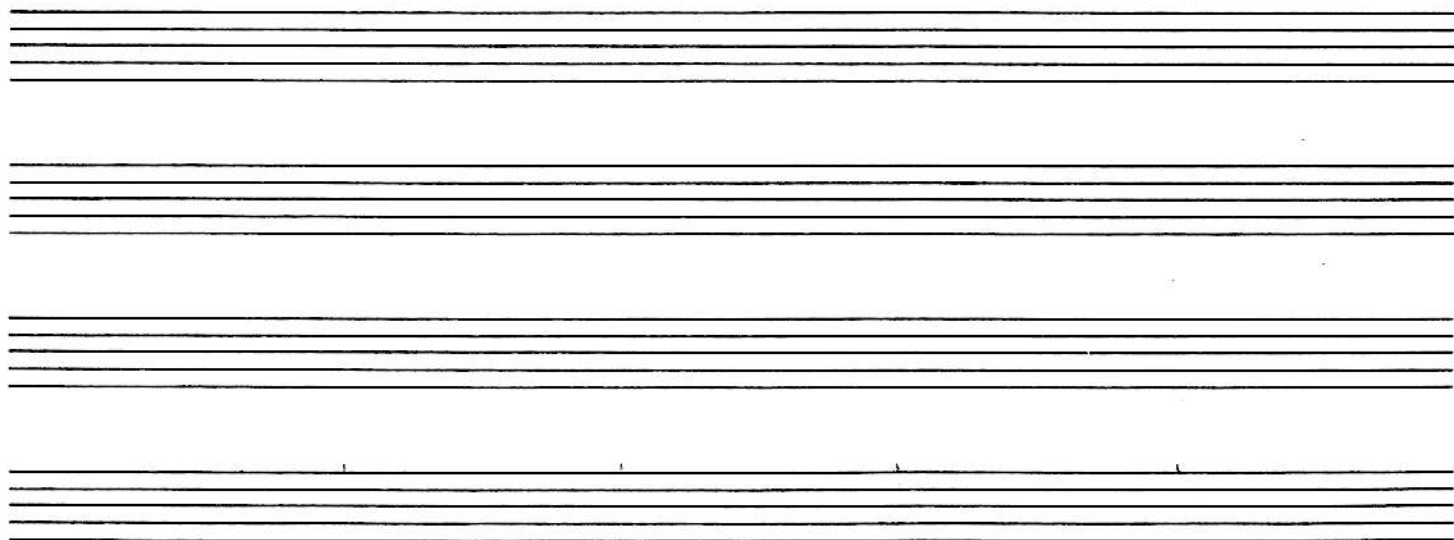
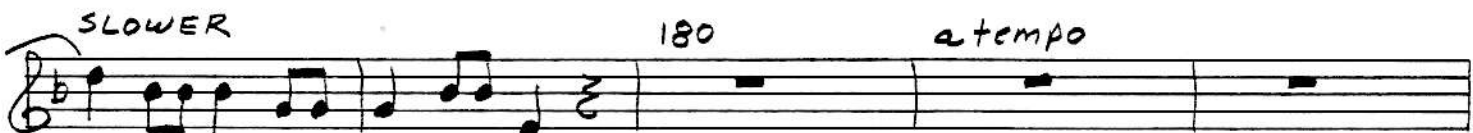
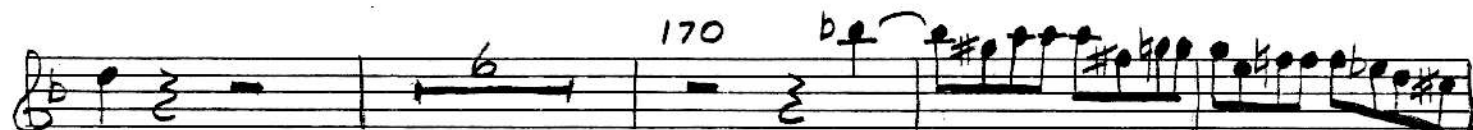
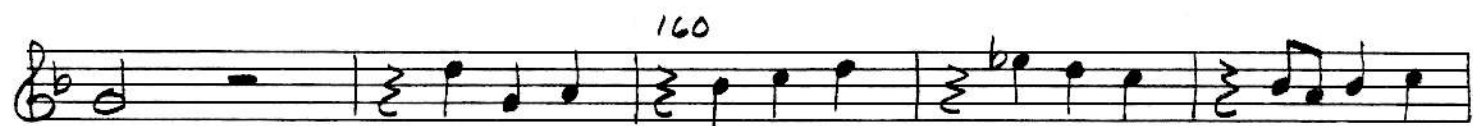
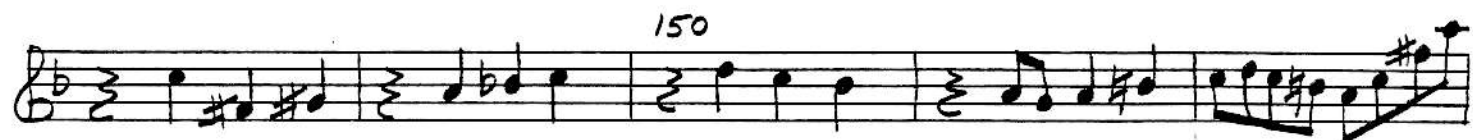
T

contra. 8, page 2

Handwritten musical score for Contrabass, page 2, measures 70-140. The score is written on ten staves in G major (one sharp) and 2/4 time. Measure numbers 70, 75, 80, 85, 95, 100, 105, 116, 120, 125, 130, 135, and (9) 140 are indicated above the staves. The notation includes various rhythmic values, accidentals, and articulation marks such as accents and trills (tr). A tempo change to *a tempo* is noted above measure 85. The score concludes with a final note in measure 140.

T

contra. 8, page 3



B

Contra. 8, page 2

65

65

70

70

75

75

80

80

85

85

90

SLOWER

90

95

95

100

100

110

110

115

115

120

120

125

125

