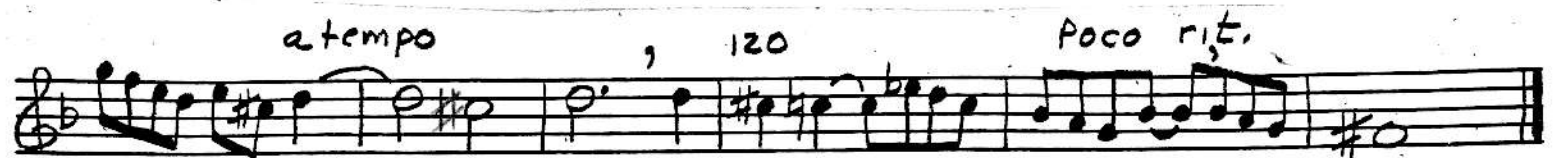
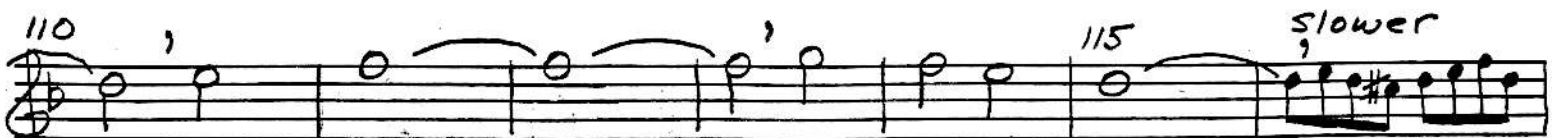
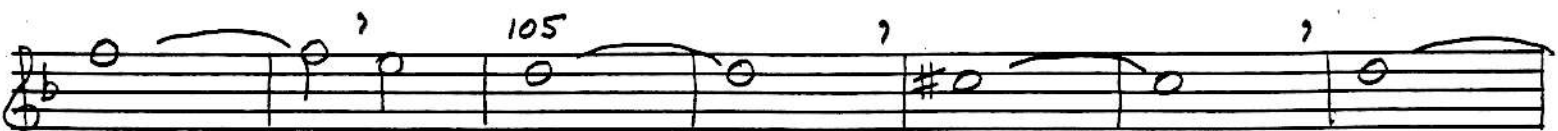
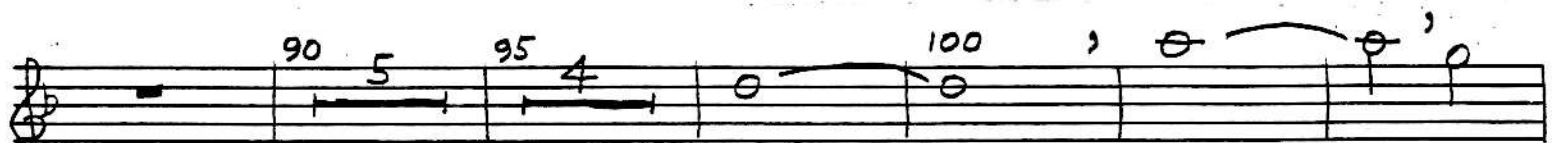
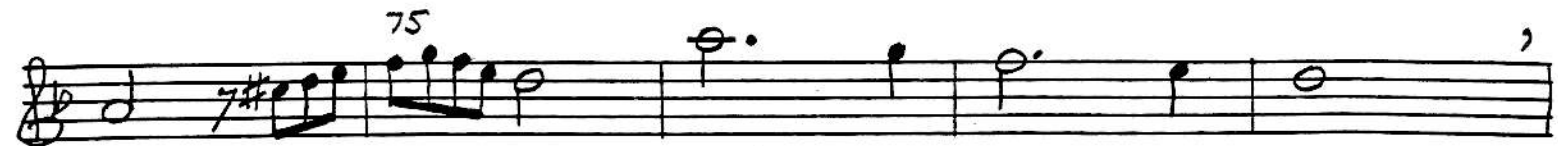


SOPRANO CONTRAPUNCTUS VII JS Bach

d ~ 50

4 5 10 15 20 25 30 35 40 45 50 55



ALTO CONTRAPUNCTUS VII JS Bach

Handwritten musical notation on a five-line staff. It begins with a treble clef, a key signature of one flat (B-flat), and a common time signature. The tempo marking 'd ~ 50' is written above the staff. The first measure contains a whole rest, followed by a measure with a '2' above it. The melody starts with a quarter note G4, followed by quarter notes A4, Bb4, and C5. The piece concludes with a quarter note G4.

Handwritten musical notation on a five-line staff. The melody continues with a quarter note D5, followed by a half note E5. A slur covers the next two measures, starting with a quarter note F5 marked with a '10' above it, followed by quarter notes G5 and A5. The piece ends with a quarter note G5.

Handwritten musical notation on a five-line staff. The melody continues with a quarter note F5, followed by a half note G5. A slur covers the next two measures, starting with a quarter note A5 marked with a '15' above it, followed by quarter notes B5 and C6. The piece ends with a quarter note B5.

Handwritten musical notation on a five-line staff. The melody continues with a quarter note A5, followed by a half note B5. A slur covers the next two measures, starting with a quarter note C6 marked with a '20' above it, followed by quarter notes D6 and E6. The piece ends with a quarter note D6.

Handwritten musical notation on a five-line staff. The melody continues with a quarter note C6, followed by a half note D6. A slur covers the next two measures, starting with a quarter note E6 marked with a '25' above it, followed by quarter notes F6 and G6. The piece ends with a quarter note E6.

Handwritten musical notation on a five-line staff. The melody continues with a quarter note D6, followed by a half note E6. A slur covers the next two measures, starting with a quarter note F6 marked with a '35' above it, followed by quarter notes G6 and A6. The piece ends with a quarter note F6.

Handwritten musical notation on a five-line staff. The melody continues with a quarter note E6, followed by a half note F6. A slur covers the next two measures, starting with a quarter note G6 marked with a '40' above it, followed by quarter notes A6 and B6. The piece ends with a quarter note G6.

Handwritten musical notation on a five-line staff. The melody continues with a quarter note F6, followed by a half note G6. A slur covers the next two measures, starting with a quarter note A6 marked with a '45' above it, followed by quarter notes B6 and C7. The piece ends with a quarter note F6.

Handwritten musical notation on a five-line staff. The melody continues with a quarter note E6, followed by a half note F6. A slur covers the next two measures, starting with a quarter note G6 marked with a '50' above it, followed by quarter notes A6 and B6. The piece ends with a quarter note E6.

Handwritten musical notation on a five-line staff. The melody continues with a quarter note D6, followed by a half note E6. A slur covers the next two measures, starting with a quarter note F6 marked with a '55' above it, followed by quarter notes G6 and A6. The piece ends with a quarter note D6.

Handwritten musical notation on a five-line staff. The melody continues with a quarter note C6, followed by a half note D6. A slur covers the next two measures, starting with a quarter note E6 marked with a '60' above it, followed by quarter notes F6 and G6. The piece ends with a quarter note C6.

A

VII page 2

Handwritten musical score for a single melodic line, consisting of ten staves. The score includes various musical notations such as notes, rests, slurs, and dynamic markings. Measure numbers 2, 65, 70, 75, 80, 85, 90, 95, 100, 105, 110, 115, and 120 are indicated above the notes. The piece concludes with the instruction "rit. --".

slower, follow soprano

a tempo

rit. --

TENOR

CONTRAPUNCTUS VII

J.S. Bach

d ≈ 50

5

10

15

20

25

30

35

40

45

50

55

60

65

70

75

80

85

90

95

100

105

110

115 (Follow soprano)

a tempo (cross) 120 poco rit.

whole 5

BASS

CONTRAPUNCTUS VII

JS Bach

$d \sim 50$

8 10 15 20 25 30 35 40 45 50 55 60 65

tr

70

75, (1) 1 (1)

(1) 80, (1)

85

90

95

100

105

110

115 (follow soprano) atempo

120 rit.