

CHORALE: Wir Glauben all an einen Gott

J S Bach

Handwritten musical score for Recorder in C major, 4/4 time. The score is arranged in three systems, each with four staves (Soprano, Alto, Tenor, Bass). The tempo is marked $\text{♩} = 55$. The key signature has one flat (B-flat). The score includes various musical notations such as notes, rests, slurs, and ornaments. Fingerings are indicated by numbers 1-5 above notes. The piece concludes with a fermata over the final note.

System 1 of a musical score, consisting of four staves. The top staff is in treble clef with a key signature of one flat (Bb). It contains a melody with a fermata over a whole note in the third measure, marked with a circled '15'. The second staff is in treble clef and contains a complex, fast-moving accompaniment with many beamed notes. The third and fourth staves are in treble and bass clefs respectively, providing harmonic support with various note values and rests.

System 2 of the musical score, also consisting of four staves. The top staff continues the melody from the first system, with a fermata over a whole note in the fourth measure, marked with a circled '20'. The second staff continues the complex accompaniment. The third and fourth staves continue the harmonic support.

System 3 of the musical score, consisting of four staves. The top staff continues the melody, ending with a sharp sign (#) on the final note. The second staff continues the complex accompaniment. The third and fourth staves continue the harmonic support.

Musical score system 1, measures 25-28. It consists of four staves: Treble clef, Alto clef, Tenor clef, and Bass clef. The key signature has one flat (B-flat). The music features a variety of note values including eighth, quarter, and half notes, with some slurs and accents. Measure 25 starts with a treble clef staff containing a quarter note G4, an eighth note A4, and a quarter note B4. The bass clef staff contains a half note G2. Measure 26 begins with a treble clef staff containing a quarter note G4, a quarter note A4, and a quarter note B4. The bass clef staff contains a half note G2. Measure 27 features a treble clef staff with a quarter note G4, a quarter note A4, and a quarter note B4. The bass clef staff contains a half note G2. Measure 28 concludes with a treble clef staff containing a quarter note G4, a quarter note A4, and a quarter note B4. The bass clef staff contains a half note G2.

Musical score system 2, measures 29-32. It consists of four staves: Treble clef, Alto clef, Tenor clef, and Bass clef. The key signature has one flat (B-flat). The music continues with similar note values and includes slurs and accents. Measure 29 starts with a treble clef staff containing a quarter note G4, a quarter note A4, and a quarter note B4. The bass clef staff contains a half note G2. Measure 30 begins with a treble clef staff containing a quarter note G4, a quarter note A4, and a quarter note B4. The bass clef staff contains a half note G2. Measure 31 features a treble clef staff with a quarter note G4, a quarter note A4, and a quarter note B4. The bass clef staff contains a half note G2. Measure 32 concludes with a treble clef staff containing a quarter note G4, a quarter note A4, and a quarter note B4. The bass clef staff contains a half note G2.

CHORALE: Wir Glauben all an einen Gott

Bach

SOPRANO

Handwritten musical score for Soprano voice, titled "CHORALE: Wir Glauben all an einen Gott" by Bach. The score is written on six staves in G major, C major, and G major. It includes measure numbers 5, 10, 15, 20, 25, and 30, and fermatas over several notes.

Hold fermatas one extra quarter note

CHORALE: wir glauben all an einen Gott

Bach

Alto

Handwritten musical score for Alto voice part of 'Wir glauben all an einen Gott' by J.S. Bach. The score is written on a single staff in G major (one sharp) and 4/4 time. It consists of 32 measures, with measure numbers 5, 10, 15, 20, 25, and 30 indicated. The melody features various rhythmic values including quarter, eighth, and sixteenth notes, as well as rests and fermatas. The key signature is G major (one sharp), and the time signature is 4/4. The piece concludes with a final whole note chord in the 32nd measure.

Hold fermatas one extra quarter note

CHORALE: Wir glauben all an einen Gott

Bach

TENOR

Handwritten musical score for Tenor voice, titled "CHORALE: Wir glauben all an einen Gott" by Bach. The score consists of eight staves of music in G major, 4/4 time. It includes various musical notations such as notes, rests, fermatas, and measure numbers (5, 10, 15, 20, 30). The music is written in a clear, legible hand.

Hold fermatas one extra quarter note

CHORALE: Wir glauben all an einen Gott

Bach

BASS

Handwritten musical score for Bass part of 'Wir glauben all an einen Gott' by J.S. Bach. The score consists of eight staves of music in bass clef, 3/4 time, with a key signature of one flat (B-flat). The music features various rhythmic patterns, including eighth and sixteenth notes, and rests. Fermatas are placed over several notes, with some numbered 5, 10, 15, and 20. A 'b' with a 'f' is written above the first staff. The piece concludes with a double bar line.

Hold Fermatas one extra quarter note

CHORALE FANTASIA

"wir glauben all'an einen Gott"

J.S. Bach

A *dn60*

T *dn60*

B *dn60*

10

10

S

15

15

15

15

G-B = K



Musical score system 1, measures 18-21. The system consists of five staves. The top staff is in treble clef with a key signature of one sharp (F#). The second staff is in treble clef with a key signature of two sharps (F#, C#). The third staff is in treble clef with a key signature of one sharp (F#). The fourth staff is in bass clef with a key signature of one sharp (F#). The fifth staff is in bass clef with a key signature of one sharp (F#). Measure numbers 18, 19, 20, and 21 are indicated at the end of each staff. A 'cu' marking is present above the second staff in measure 21.



Musical score system 2, measures 22-25. The system consists of four staves. The top staff is in treble clef with a key signature of one sharp (F#). The second staff is in treble clef with a key signature of two sharps (F#, C#). The third staff is in treble clef with a key signature of one sharp (F#). The fourth staff is in bass clef with a key signature of one sharp (F#). Measure numbers 22, 23, 24, and 25 are indicated at the end of each staff.



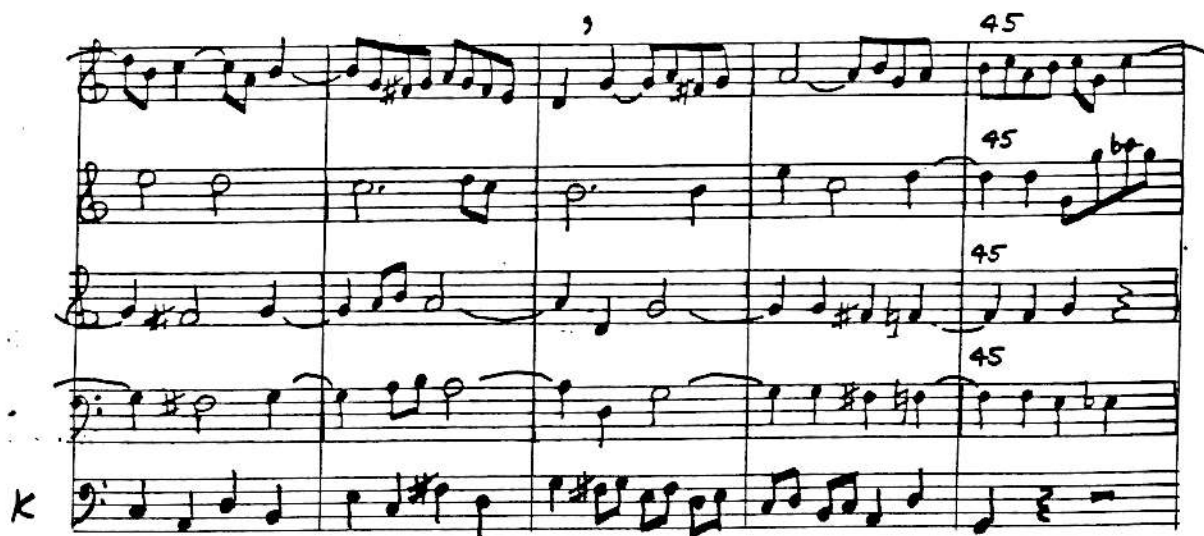
Musical score system 3, measures 26-29. The system consists of five staves. The top staff is in treble clef with a key signature of one sharp (F#). The second staff is in treble clef with a key signature of two sharps (F#, C#). The third staff is in treble clef with a key signature of one sharp (F#). The fourth staff is in bass clef with a key signature of one sharp (F#). The fifth staff is in bass clef with a key signature of one sharp (F#). Measure numbers 26, 27, 28, and 29 are indicated at the end of each staff.



Musical score system 1, measures 31-35. The system consists of five staves. The top four staves are in treble clef, and the bottom staff is in bass clef with a 'K' marking. Measure numbers 31, 32, 33, 34, and 35 are indicated above the staves. The music features various rhythmic patterns and accidentals.



Musical score system 2, measures 36-40. The system consists of five staves. The top four staves are in treble clef, and the bottom staff is in bass clef with a 'K' marking. Measure numbers 36, 37, 38, 39, and 40 are indicated above the staves. A '(2)' marking is present above the first staff. The music continues with complex rhythmic and melodic lines.



Musical score system 3, measures 41-45. The system consists of five staves. The top four staves are in treble clef, and the bottom staff is in bass clef with a 'K' marking. Measure numbers 41, 42, 43, 44, and 45 are indicated above the staves. The music concludes with various rhythmic and melodic patterns.

(1)



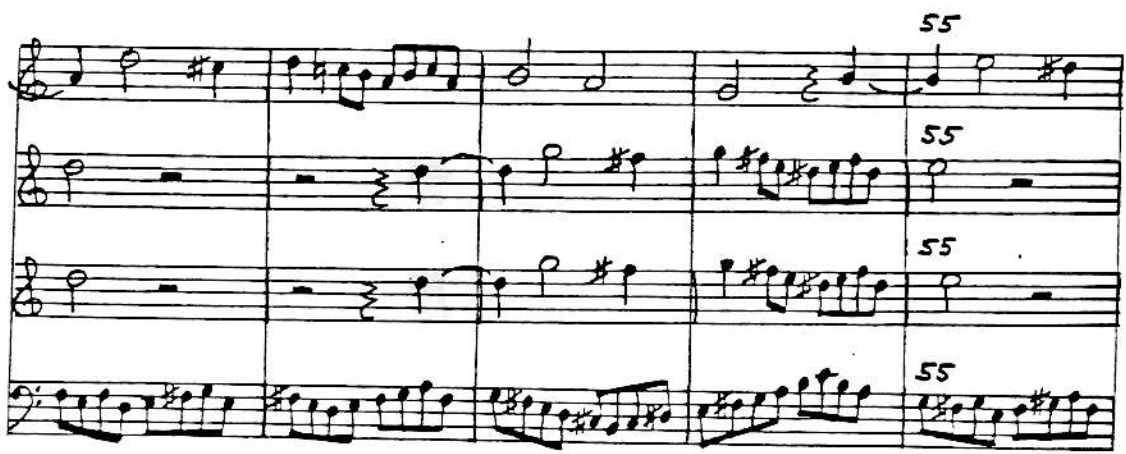
50

50

50

50

This system contains four staves of music. The first staff begins with a treble clef and a key signature of one sharp (F#). The music consists of eighth and sixteenth notes. The number '50' is written above the first measure of the first staff and above the final measure of each of the four staves.



55

55

55

55

This system contains four staves of music. The first staff begins with a treble clef and a key signature of two sharps (F# and C#). The music consists of eighth and sixteenth notes. The number '55' is written above the first measure of the first staff and above the final measure of each of the four staves.



60

60

60

60

60

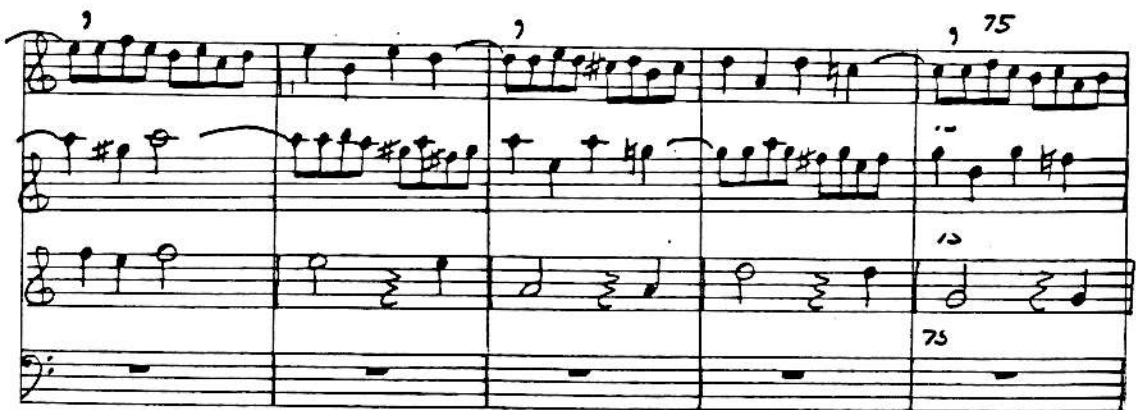
This system contains five staves of music. The first staff begins with a treble clef and a key signature of two sharps (F# and C#). The music consists of eighth and sixteenth notes. The number '60' is written above the first measure of the first staff and above the final measure of each of the five staves. A large 'K' is written to the left of the bottom staff.



Handwritten musical score system 1, consisting of five staves. The notation includes treble and bass clefs, various note values, and accidentals. Measure numbers 65 and 60 are visible above and below the staves.




Handwritten musical score system 2, consisting of four staves. The notation includes treble and bass clefs, various note values, and accidentals. Measure numbers 70 and 60 are visible above and below the staves.



Handwritten musical score system 3, consisting of three staves. The notation includes treble and bass clefs, various note values, and accidentals. Measure numbers 75 and 70 are visible above and below the staves.



Musical score system 1, measures 75-80. The system consists of five staves. The top staff is a treble clef with a key signature of two sharps (F# and C#). The second and third staves are also treble clefs. The fourth and fifth staves are bass clefs, with a 'K' marking on the fifth staff. Measure numbers 80, 80, 80, and 80 are written above the staves at the end of measures 75, 76, 77, and 78 respectively. The music features complex rhythmic patterns with many beamed notes and rests.



Musical score system 2, measures 81-85. The system consists of five staves. The top staff is a treble clef with a key signature of two sharps. The second and third staves are also treble clefs. The fourth and fifth staves are bass clefs, with a 'K' marking on the fifth staff. Measure numbers 85, 85, 85, and 85 are written above the staves at the end of measures 81, 82, 83, and 84 respectively. The music continues with complex rhythmic patterns and rests.



Musical score system 3, measures 86-90. The system consists of five staves. The top staff is a treble clef with a key signature of two sharps. The second and third staves are also treble clefs. The fourth and fifth staves are bass clefs. Measure numbers 90, 90, 90, and 90 are written above the staves at the end of measures 86, 87, 88, and 89 respectively. The music continues with complex rhythmic patterns and rests.

Handwritten musical score for the first system, consisting of five staves. The notation includes treble and bass clefs, various note values (quarter, eighth, sixteenth notes), rests, and accidentals. A 'K' time signature is present at the beginning. The number '95' is written above the first staff in the fourth measure. The piece concludes with a double bar line and a sharp sign (#) on the second staff.

Handwritten musical score for the second system, consisting of five staves. The notation includes treble and bass clefs, various note values, rests, and accidentals. A 'K' time signature is present at the beginning. The number '100' is written above the first staff in the fourth measure. The piece concludes with a double bar line and a sharp sign (#) on the second staff.

This is the most overtly swinging piece by Bach that the editor has encountered.

Chorale fantasia: "Wir glauben all' an einen Gott"

soprano

♩ = 60

J S Bach

12 15 20 25 30 35 40 45 50 55 60

(s) (s)

S

wir glauben -- page 2

Handwritten musical score for voice and piano, page 2 of "Wir glauben". The score consists of eight staves of music. The first staff is the vocal line, starting with a treble clef and a key signature of one sharp (F#). The second staff is the piano accompaniment, starting with a treble clef. The score includes various musical notations such as notes, rests, accidentals, and dynamic markings. Measure numbers 65, 70, 75, 80, 85, 90, 95, and 100 are indicated at the end of their respective staves. The piece concludes with a double bar line at the end of the eighth staff.

Chorale fantasia: "Wir glauben all' an einen Gott"

Alto

J S Bach

$d \sim 60$

5

10

15

20

25

30

35

40

45

50

55

A

Handwritten musical score for 'wir glauben' on page 2, section A. The score consists of ten staves of music in treble clef. Measure numbers 60, 65, 70, 75, 80, 85, 90, 95, and 100 are marked above the staves. The music features various rhythmic patterns, including eighth and sixteenth notes, and rests. There are some handwritten annotations, such as a 'b' above a note in measure 65 and a '7' below a note in measure 66. The score ends with a double bar line at measure 100.

Tenor Chorale fantasia: "Wir glauben all' an einen Gott" J S Bach

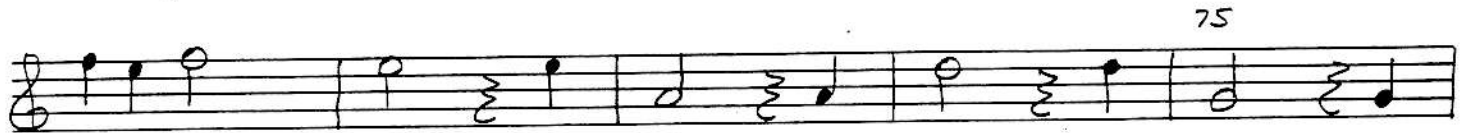
♩ = 60

5
10
15
20
25
30
35
40
45
50
55

wir glauben - -

page 2

T



wir glauben - -

B

Handwritten musical score for bass clef, measures 55-100. The score consists of ten staves of music. The key signature is one sharp (F#) and the time signature is 4/4. The notation includes eighth and sixteenth notes, rests, and various accidentals. Measure numbers 55, 60, 65, 70, 75, 80, 85, 90, 95, and 100 are written above the staves. A fermata is present over the final note of measure 100. A 'b' (flat) is written above the final note of measure 80. A 'm' (mordent) is written above the final note of measure 100.

~~Low String~~ or G-B du60 Chorale fantasia: "Wir glauben all' an einen Gott" JS Bach

The image shows a handwritten musical score for a low string instrument, likely a double bass, in G major and 4/4 time. The score is titled "Chorale fantasia: 'Wir glauben all' an einen Gott'" by JS Bach. The key signature is one sharp (F#), and the time signature is 4/4. The score is written on ten staves, with measures numbered from 1 to 100. The notation includes various rhythmic values, accidentals, and fingerings. The first staff begins with a treble clef and a common time signature, but the rest of the score is in bass clef. The score includes several slurs and fingerings, such as a triplet of eighth notes in measure 3, a five-finger slur in measure 5, a six-finger slur in measure 27, and a seven-finger slur in measure 40. There are also some circled notes in measures 27 and 30, possibly indicating specific articulations or corrections. The score ends with a double bar line in measure 100.